



## A SEAMLESS, ACCESSIBLE TRAVEL EXPERIENCE IN *Pattaya*

Thailand ranks among Asia's premier travel destinations, celebrated for its rich cultural heritage, pristine beaches, and renowned hospitality. While accessibility needs have traditionally posed challenges for travelers, Pattaya has emerged as a pioneering destination that embraces inclusivity and welcomes all visitors. With accessible transportation networks, barrier-free attractions, and thoughtfully designed accommodations, Pattaya delivers a stress-free getaway that truly serves everyone.





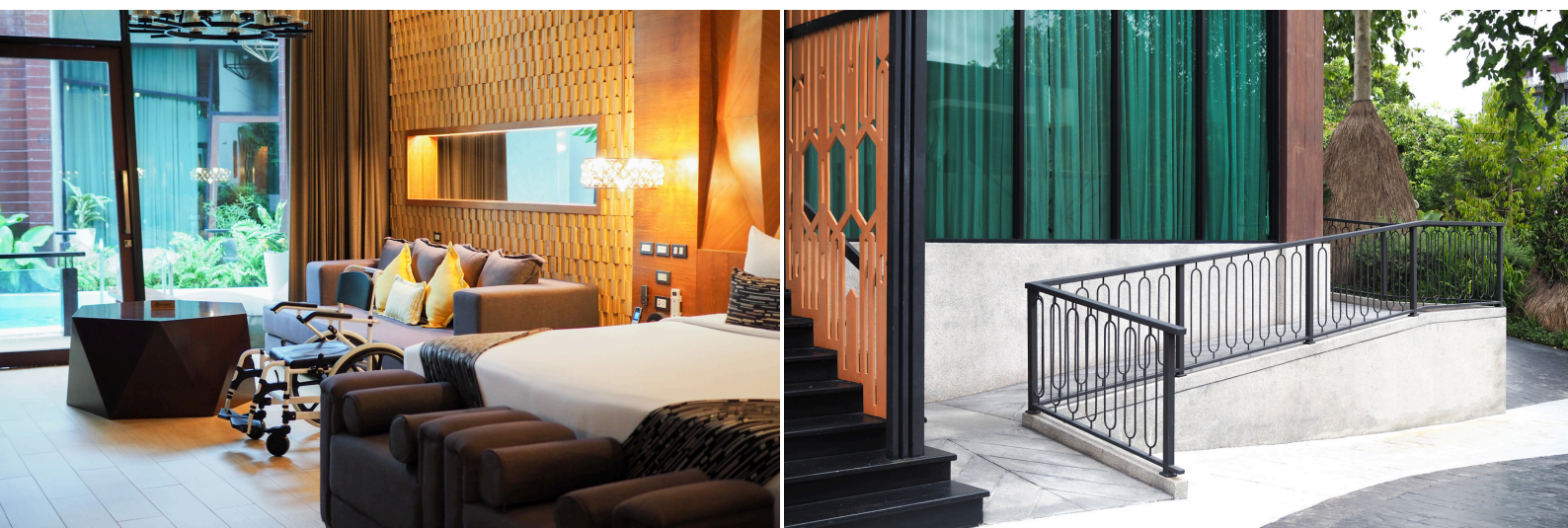
## GETTING TO PATTAYA WITH CONFIDENCE

International travelers benefit from Suvarnabhumi International Airport's comprehensive accessibility services in Bangkok. The airport features dedicated check-in counters, priority security screening, and on-demand wheelchair assistance. Multiple accessible transportation options connect the airport to Pattaya. The smooth one-and-a-half-hour highway journey leads directly to a vibrant coastal city renowned for its entertainment and relaxing atmosphere.

## YOUR IDEAL ACCESSIBLE SANCTUARY: LA MINIERA POOL VILLAS PATTAYA

### Thailand's First IncluCare-Verified Resort

Choosing the right accommodation defines your travel experience. **La Miniera Pool Villas Pattaya**, an exclusive luxury boutique resort, represents the perfect fusion of privacy, comfort, and universal accessibility. As Thailand's inaugural IncluCare-verified property, the resort demonstrates unwavering commitment to providing seamless experiences for guests with diverse abilities.



## THOUGHTFULLY DESIGNED ACCOMMODATIONS

### Accessibility Features in Our Private Pool Villas

Our private pool villas is thoughtfully designed with accessibility in mind, ensuring comfort and convenience for all guests. Notably, Family Pool Villa No. 159 and our Deluxe Pool Villa No. 141 offer enhanced accessible features including wide doorways and step-free entry, with the main villa door measuring 91 cm in width and layouts that allow ample space for wheelchair maneuvering. The bathrooms feature door widths of 77 cm and are equipped with roll-in showers. Showerheads are adjustable, starting at 90 cm in height. The sink height is 88 cm, with towels placed at a reachable height of 30 cm. Grab bars are installed in both the shower and at the toilet for additional safety and support. Each villa features a private ozone pool with a shallow depth of just 60 cm and includes a jacuzzi seating stool for ease of use. Interior furnishings are thoughtfully positioned to ensure both comfort and functionality, with a coffee table at 43 cm, a sofa seat at 47 cm, a bed at 70 cm, a tea and coffee station table at 51 cm, and a bathroom seating sofa also at 43 cm.

The villas also provide easy access to the balcony, which features a table and stool, both at 45 cm height. The wardrobe includes a low-height clothes rail at 128 cm, making it accessible for all guests.



Image courtesy of Bivoyage YouTube Channel



## INCLUSIVE DINING EXPERIENCES

Culinary exploration forms the heart of memorable travel, and La Miniera offers exceptional dining options designed for every guest.



**Zaffiro Restaurant** offers step-free access, featuring an elevator with a clear entry width of 90 cm and an obstacle-free environment throughout the venue. Guests can enjoy a seamless dining experience while savoring modern Asian fusion cuisine, thoughtfully prepared with fresh, locally sourced ingredients. Dining tables are set at a comfortable height of 74 cm. An accessible restroom is available in the lobby area, featuring an entry width of 89 cm and a sink height of 78 cm, ensuring comfort and convenience for all guests.

**Topazio Italiano Gelato Bar** offers accessible service and serves a delightful range of handcrafted Italian gelato. The venue is easily accessible through the lobby, featuring a ramp with a width of 100 cm and an automatic sliding door with a generous width of 170 cm. Dining tables are available at two convenient heights: 60 cm and 74 cm, catering to various guest needs. An accessible restroom is located within the restaurant area, providing an entry width of 89 cm and a sink height of 78 cm, ensuring comfort and ease of use for all guests.



**In-Villa Dining Service** provides gourmet meals in the privacy of your accommodation, perfect for guests preferring intimate dining experiences.





## ACCESSIBLE PARKING SERVICES

Designated accessible parking spaces are conveniently located near the hotel's main entrance on flat, step-free ground, providing easy access to the lobby or villas. A slope with a width of 100 cm ensures smooth, barrier-free movement for guests with mobility needs.

Guests may contact the hotel team for assistance with vehicle access, including support with entering and exiting vehicles and luggage handling services. Our staff is always ready to offer courteous and attentive service to ensure a seamless arrival experience.

## POOL HOIST SERVICE

A Pool Hoist service is available using the BlueOne lift system, operated by a trained attendant. This service can be arranged with advance notice to the reception team. The pool hoist is accessible at the 2-Bedroom Villa Suite, 3-Bedroom Villa Suite, and the Main Pool area, ensuring safe and comfortable pool access for guests with mobility needs.



## BARRIER-FREE RECREATION AND WELLNESS

La Miniera transcends traditional luxury accommodation by offering comprehensive wellness and entertainment experiences.

**PRIVÉ SPA** provides accessible treatment rooms where trained therapists deliver personalized massages, facials, and wellness therapies adapted for guests with varying mobility levels.



## BARRIER-FREE RECREATION AND WELLNESS

**Alessandrite Water Park** sets new standards for inclusive recreation with gentle access ramps and floating wheelchairs, ensuring every guest can enjoy aquatic adventures.



**Disney Kids' Club** features wheelchair-friendly design with engaging indoor play areas specifically created for young travelers.



**Active Pursuits** include electric bicycle rentals for effortless area exploration, plus meaningful eco-friendly activities and CSR initiatives. Our signature marine conservation workshops, including shark, crab, and clam release programs, remain guest favorites.





## DISCOVERING ACCESSIBLE PATTAYA

Beyond the resort, Pattaya offers numerous accessible attractions for comprehensive city exploration:

- Pattaya Beach now features designated accessible walkways, bringing wheelchair users closer to ocean experiences
- Pattaya Viewpoint provides stunning panoramic city views through step-free observation areas
- Terminal 21 Pattaya and other major shopping centers offer fully accessible retail and dining experiences with elevators, ramps, and wheelchair-friendly facilities. Shuttle service is available to Terminal 21.

Our dedicated concierge service arranges accessible transportation, ensuring comfortable and convenient city exploration.

## SUPPORT AND SERVICES FOR GUESTS WITH SPECIAL NEEDS

The hotel provides personalized services to accommodate guests with a variety of needs. Guests with hidden disabilities are encouraged to inform us of any specific requirements so we can ensure a comfortable and seamless stay.

All team members are trained in accessibility awareness and service, ensuring that every guest receives respectful, attentive, and professional support throughout their visit.





## SETTING NEW STANDARDS FOR INCLUSIVE LUXURY

Travel should be universally accessible, regardless of mobility considerations. La Miniera Pool Villas Pattaya exemplifies the future of inclusive hospitality through its elegant, barrier-free environment where all guests enjoy unrestricted vacation experiences.

With verified accessibility standards, private luxury accommodations, and a genuine commitment to inclusivity, the resort establishes new benchmarks for accessible travel throughout Thailand.

For travelers seeking worry-free, comfortable, and unforgettable Pattaya escapes, La Miniera Pool Villas Pattaya delivers the perfect balance of privacy, relaxation, and accessibility—proving that true luxury serves everyone.

LA MINIERA POOL VILLAS PATTAYA PROUDLY HOLDS  
THAILAND'S FIRST INCLUCARE VERIFICATION, REPRESENTING  
OUR UNWAVERING COMMITMENT TO ACCESSIBLE  
HOSPITALITY EXCELLENCE.

